

	November <u>2013</u>	November <u>2014</u>	Difference <u>13 vs 14</u>	Percent <u>(%) Change</u>	Year to Date <u>2013</u>	Year to Date <u>2014</u>	Difference <u>13 vs 14</u>	Percent <u>(%) change</u>
Total Enplaned	84,442	80,485	(3,957)	-4.69%	1,002,497	956,016	(46,481)	-4.64%
Total Deplaned	85,291	80,687	(4,604)	-5.40%	1,001,912	957,850	(44,062)	-4.40%
Total Passengers	169,733	161,172	(8,561)	-5.04%	2,004,409	1,913,866	(90,543)	-4.52%

Enplaned Passengers by Airline

	November <u>2013</u>	November <u>2014</u>	Difference <u>13 vs 14</u>	Percent <u>(%) Change</u>	Year to Date <u>2013</u>	Year to Date <u>2014</u>	Difference <u>13 vs 14</u>	Percent <u>(%) change</u>
American Eagle	17,228	19,406	2,178	12.64%	215,897	226,612	10,715	4.96%
Delta Airlines	19,418	19,912	494	2.54%	223,018	221,746	(1,272)	-0.57%
Southwest	24,752	22,195	(2,557)	-10.33%	310,479	269,302	(41,177)	-13.26%
United Airlines	13,773	12,577	(1,196)	-8.68%	151,278	140,852	(10,426)	-6.89%
US Airways	5,844	5,307	(537)	-9.19%	70,552	64,708	(5,844)	-8.28%
Charters	198	0	(198)	100.00%	597	731	134	22.45%
Frontier Airlines	2,105	0	(2,105)	-100.00%	23,867	20,363	(3,504)	-14.68%
Allegiant	1,124	1,088	(36)	-3.20%	6,809	11,702	4,893	71.86%
Total	84,442	80,485	(3,957)	-4.69%	1,002,497	956,016	(46,481)	-4.64%

Deplaned Passengers by Airline

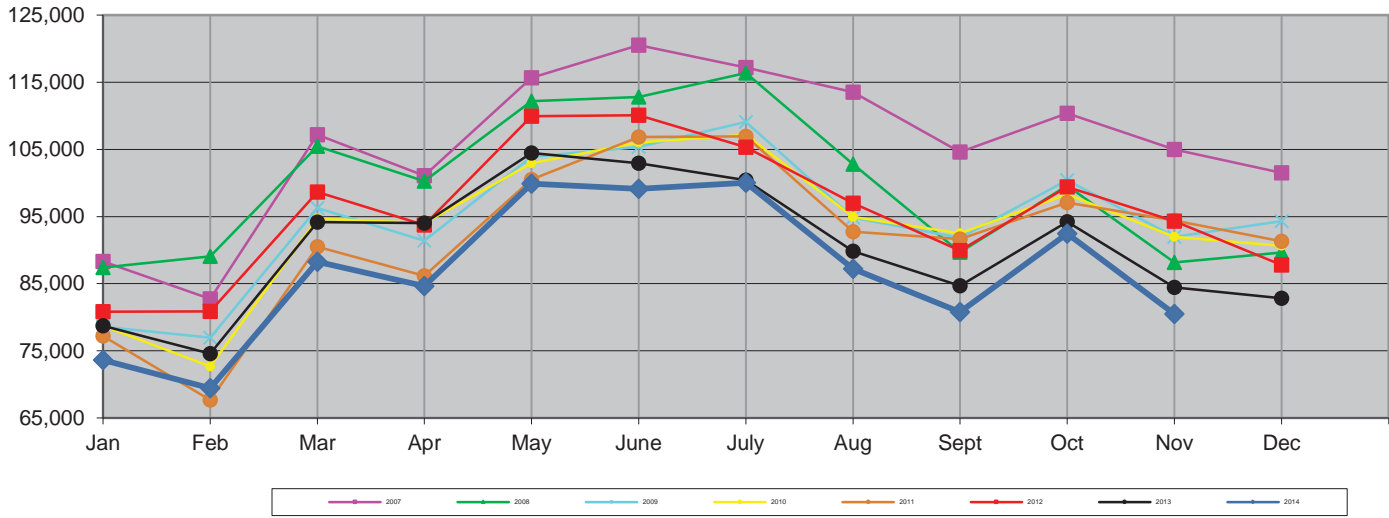
	November <u>2013</u>	November <u>2014</u>	Difference <u>13 vs 14</u>	Percent <u>(%) Change</u>	Year to Date <u>2013</u>	Year to Date <u>2014</u>	Difference <u>13 vs 14</u>	Percent <u>(%) change</u>
American Eagle	17,789	19,883	2,094	11.77%	219,031	230,997	11,966	5.46%
Delta Airlines	19,538	19,974	436	2.23%	222,809	221,018	(1,791)	-0.80%
Southwest	25,076	22,156	(2,920)	-11.64%	306,716	267,244	(39,472)	-12.87%
United Airlines	13,828	12,420	(1,408)	-10.18%	151,225	141,166	(10,059)	-6.65%
US Airways	5,713	5,155	(558)	-9.77%	69,865	63,868	(5,997)	-8.58%
Charters	58	0	(58)	100.00%	438	675	237	54.11%
Frontier Airlines	2,240	0	(2,240)	-100.00%	25,207	21,365	(3,842)	-15.24%
Allegiant	1,049	1,099	50	4.77%	6,621	11,517	4,896	73.95%
Total	85,291	80,687	(4,604)	-5.40%	1,001,912	957,850	(44,062)	-4.40%

Total Passengers by Airline

	November <u>2013</u>	November <u>2014</u>	Difference <u>13 vs 14</u>	Percent <u>(%) Change</u>	Year to Date <u>2013</u>	Year to Date <u>2014</u>	Difference <u>13 vs 14</u>	Percent <u>(%) change</u>
American Eagle	35,017	39,289	4,272	12.20%	434,928	457,609	22,681	5.21%
Delta Airlines	38,956	39,886	930	2.39%	445,827	442,764	(3,063)	-0.69%
Southwest	49,828	44,351	(5,477)	-10.99%	617,195	536,546	(80,649)	-13.07%
United Airlines	27,601	24,997	(2,604)	-9.43%	302,503	282,018	(20,485)	-6.77%
US Airways	11,557	10,462	(1,095)	-9.47%	140,417	128,576	(11,841)	-8.43%
Charters	256	0	(256)	-100.00%	1,035	1,406	371	35.85%
Frontier Airlines	4,345	0	(4,345)	-100.00%	49,074	41,728	(7,346)	-14.97%
Allegiant	2,173	2,187	14	0.64%	13,430	23,219	9,789	72.89%
Total	169,733	161,172	(8,561)	-5.04%	2,004,409	1,913,866	(90,543)	-4.52%

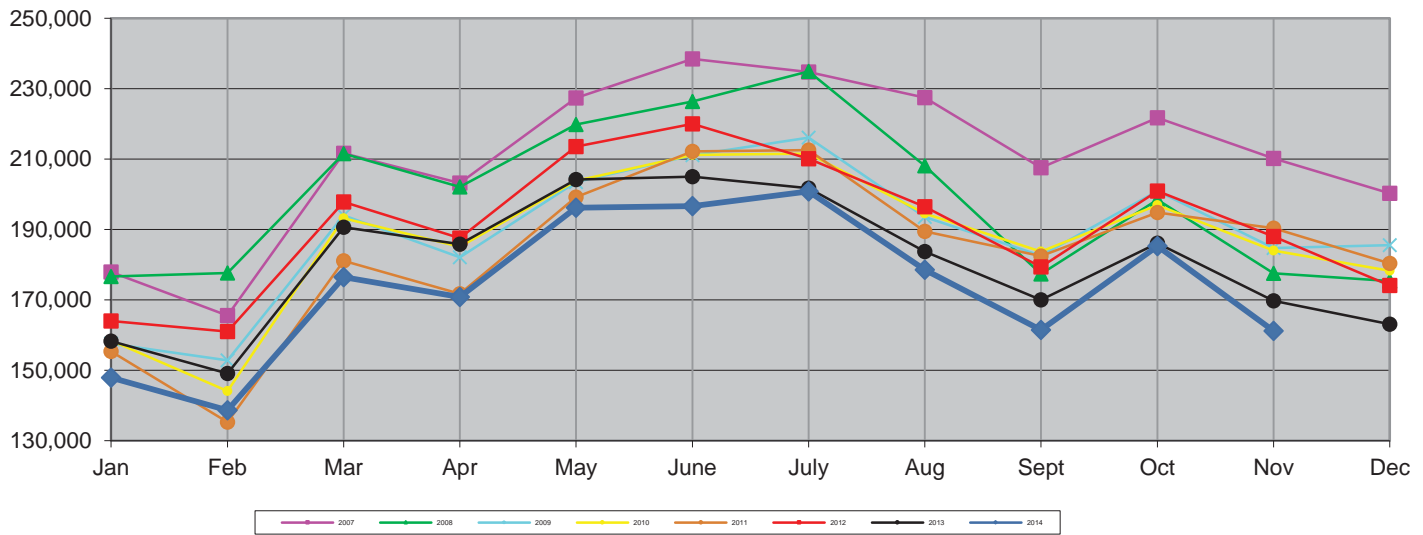
Passenger Activity Forecast vs. Actual

Enplaned Passengers



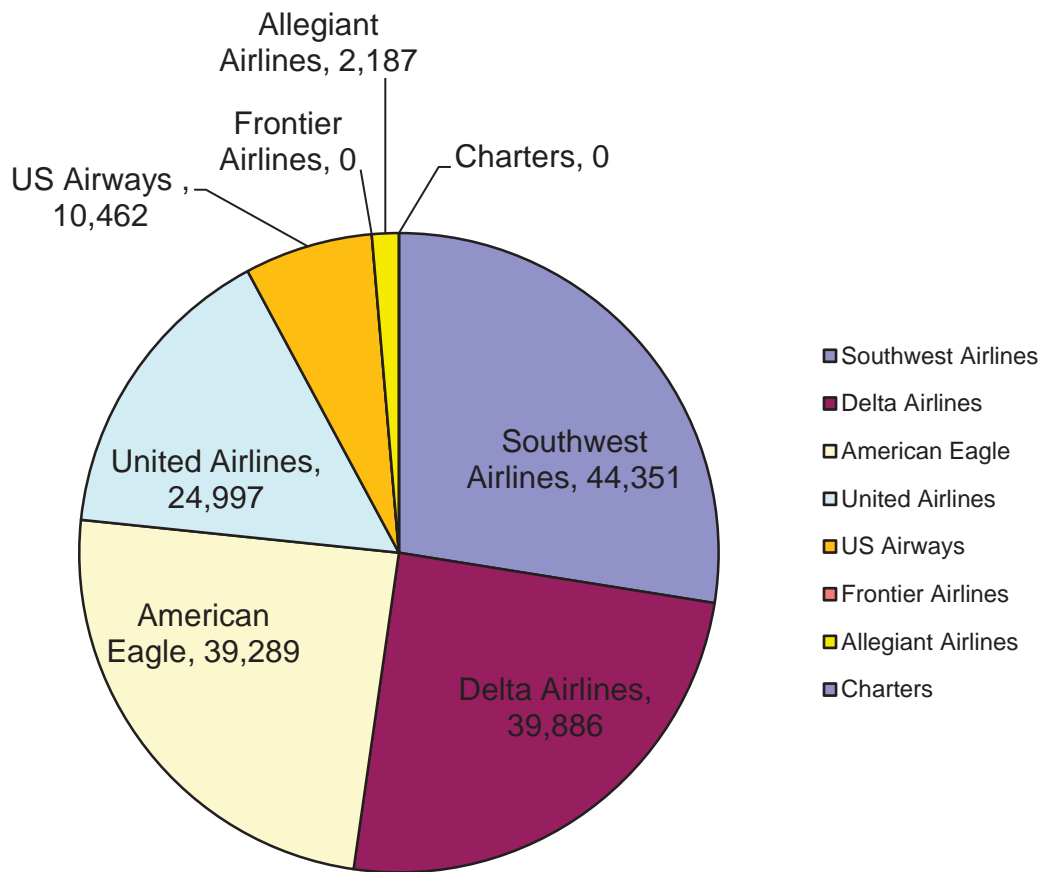
Year	Jan	Feb	Mar	Apr	May	June	July	Aug	Sept	Oct	Nov	Dec	Total	% Change
2007	88,325	82,731	107,198	101,085	115,677	120,522	117,170	113,507	104,622	110,371	104,970	101,519	1,267,697	
2008	87,428	89,060	105,487	100,282	112,170	112,788	116,397	102,813	89,688	99,608	88,146	89,635	1,193,502	-5.85%
2009	78,571	76,974	96,260	91,412	103,874	105,388	109,071	94,853	91,821	100,433	91,978	94,335	1,134,970	-4.90%
2010	78,740	72,692	94,712	94,049	102,938	106,056	107,169	94,944	92,497	98,309	91,966	90,631	1,124,703	-0.90%
2011	77,188	67,684	90,497	86,187	100,489	106,822	106,919	92,754	91,655	97,074	94,407	91,334	1,103,010	-1.93%
2012	80,845	80,877	98,642	93,745	109,957	110,099	105,303	96,965	89,916	99,426	94,303	87,808	1,147,886	4.07%
2013	78,743	74,585	94,153	94,050	104,483	102,923	100,430	89,815	84,673	94,200	84,442	82,826	1,085,323	-5.45%
2014	73,639	69,459	88,282	84,630	99,882	99,128	100,034	87,230	80,800	92,447	80,485			

Total Passengers



Year	Jan	Feb	Mar	Apr	May	June	July	Aug	Sept	Oct	Nov	Dec	Total	% Change
2007	177,938	165,556	211,664	203,221	227,378	238,456	234,722	227,447	207,571	221,707	210,230	200,239	2,526,129	
2008	176,679	177,682	211,580	202,061	219,789	226,404	234,938	208,068	177,341	198,479	177,505	175,360	2,385,886	-5.55%
2009	157,555	152,796	193,967	182,117	203,478	211,131	216,063	193,509	182,519	200,934	184,704	185,532	2,264,305	-5.10%
2010	158,421	144,119	193,163	185,079	203,814	211,196	211,524	194,568	183,695	196,942	183,993	178,271	2,244,785	-0.86%
2011	155,322	135,309	181,095	171,718	199,200	212,233	212,561	189,436	182,445	194,843	190,399	180,394	2,204,955	-1.77%
2012	164,029	161,016	197,811	187,582	213,570	219,997	210,107	196,454	179,368	200,891	188,043	174,094	2,292,962	3.99%
2013	158,318	149,088	190,628	185,817	204,169	205,003	201,760	183,707	170,046	186,140	169,733	163,121	2,167,530	-5.47%
2014	147,916	138,646	176,425	170,780	196,205	196,674	200,832	178,524	161,435	185,257	161,172			

**November
Market Share Report**



<u>Airlines</u>	<u>Total Passengers</u>	<u>Market Share</u>
Southwest Airlines	44,351	27.52%
Delta Airlines	39,886	24.75%
American Eagle	39,289	24.38%
United Airlines	24,997	15.51%
US Airways	10,462	6.49%
Frontier Airlines	0	0.00%
Allegiant Airlines	2,187	1.36%
Charters	0	0.00%
Total	161,172	100.00%

LIT
Total Passengers

	2014 Total Passengers	2013 Total Passengers	Passenger Difference 13 vs 14	Percent (%) Change 13 vs 14
January	147,916	158,318	(10,402)	-6.57%
February	138,646	149,088	(10,442)	-7.00%
March	176,425	190,628	(14,203)	-7.45%
April	170,780	185,817	(15,037)	-8.09%
May	196,205	204,169	(7,964)	-3.90%
June	196,674	205,003	(8,329)	-4.06%
July	200,832	201,760	(928)	-0.46%
August	178,524	183,707	(5,183)	-2.82%
September	161,435	170,046	(8,611)	-5.06%
October	185,257	186,140	(883)	-0.47%
November	161,172	169,733	(8,561)	-5.04%
December		163,121		
Total	1,913,866	2,167,530		

	Year-to-Date 2014	Year-to-Date 2013	Year-to-Date Passenger Difference 13 vs 14	Year-to-Date Percent (%) Change 13 vs 14
Total Passengers	1,913,866	2,004,409	(90,543)	-4.52%