

	<u>December 2013</u>	<u>December 2014</u>	<u>Difference 13 vs 14</u>	<u>Percent (%) Change</u>	<u>Year to Date 2013</u>	<u>Year to Date 2014</u>	<u>Difference 13 vs 14</u>	<u>Percent (%) change</u>
<b>Total Enplaned</b>	82,826	82,367	(459)	-0.55%	1,085,323	1,038,383	(46,940)	-4.32%
<b>Total Deplaned</b>	80,295	80,318	23	0.03%	1,082,207	1,038,168	(44,039)	-4.07%
<b>Total Passengers</b>	163,121	162,685	(436)	-0.27%	2,167,530	2,076,551	(90,979)	-4.20%

#### Enplaned Passengers by Airline

	<u>December 2013</u>	<u>December 2014</u>	<u>Difference 13 vs 14</u>	<u>Percent (%) Change</u>	<u>Year to Date 2013</u>	<u>Year to Date 2014</u>	<u>Difference 13 vs 14</u>	<u>Percent (%) change</u>
<b>American Eagle</b>	17,328	19,663	2,335	13.48%	233,225	246,275	13,050	5.60%
<b>Delta Airlines</b>	19,334	20,186	852	4.41%	242,352	241,932	(420)	-0.17%
<b>Southwest</b>	25,375	24,187	(1,188)	-4.68%	335,854	293,489	(42,365)	-12.61%
<b>United Airlines</b>	11,423	11,844	421	3.69%	162,701	152,696	(10,005)	-6.15%
<b>US Airways</b>	5,938	5,470	(468)	-7.88%	76,490	70,178	(6,312)	-8.25%
<b>Charters</b>	0	0	0	0.00%	597	731	134	22.45%
<b>Frontier Airlines</b>	2,272	0	(2,272)	-100.00%	26,139	20,363	(5,776)	-22.10%
<b>Allegiant</b>	1,156	1,017	(139)	-12.02%	7,965	12,719	4,754	59.69%
<b>Total</b>	82,826	82,367	(459)	-0.55%	1,085,323	1,038,383	(46,940)	-4.32%

#### Deplaned Passengers by Airline

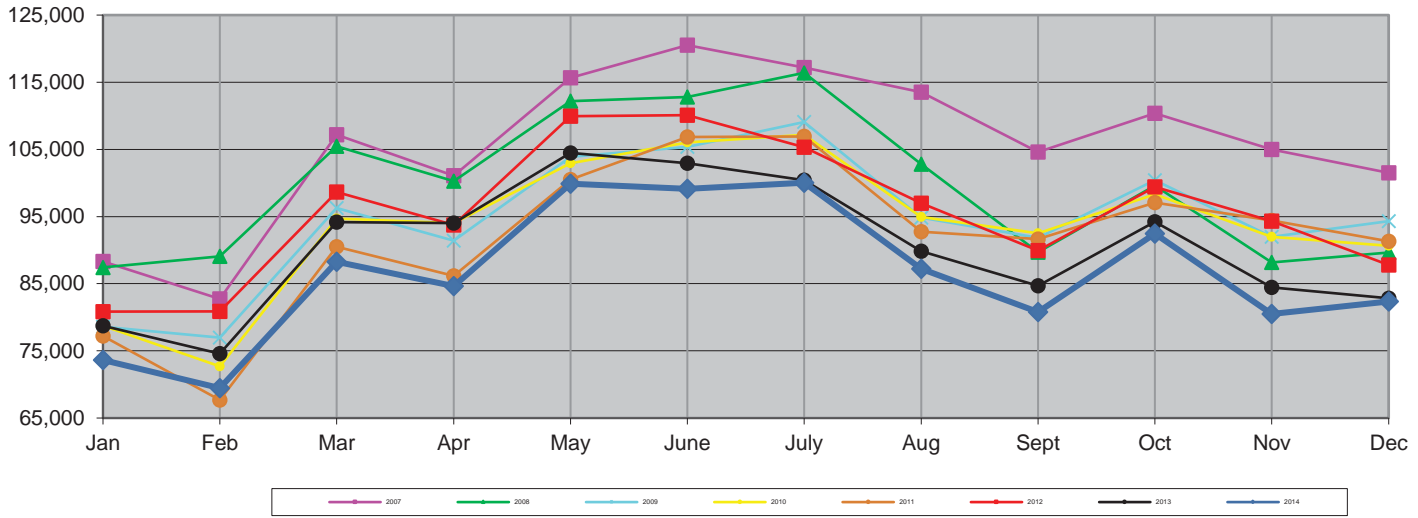
	<u>December 2013</u>	<u>December 2014</u>	<u>Difference 13 vs 14</u>	<u>Percent (%) Change</u>	<u>Year to Date 2013</u>	<u>Year to Date 2014</u>	<u>Difference 13 vs 14</u>	<u>Percent (%) change</u>
<b>American Eagle</b>	16,604	20,145	3,541	21.33%	235,635	251,142	15,507	6.58%
<b>Delta Airlines</b>	18,997	19,346	349	1.84%	241,806	240,364	(1,442)	-0.60%
<b>Southwest</b>	24,743	23,616	(1,127)	-4.55%	331,459	290,860	(40,599)	-12.25%
<b>United Airlines</b>	10,956	11,141	185	1.69%	162,181	152,307	(9,874)	-6.09%
<b>US Airways</b>	5,806	5,102	(704)	-12.13%	75,671	68,970	(6,701)	-8.86%
<b>Charters</b>	0	0	0	0.00%	438	675	237	54.11%
<b>Frontier Airlines</b>	2,197	0	(2,197)	-100.00%	27,404	21,365	(6,039)	-22.04%
<b>Allegiant</b>	992	968	(24)	-2.42%	7,613	12,485	4,872	64.00%
<b>Total</b>	80,295	80,318	23	0.03%	1,082,207	1,038,168	(44,039)	-4.07%

#### Total Passengers by Airline

	<u>December 2013</u>	<u>December 2014</u>	<u>Difference 13 vs 14</u>	<u>Percent (%) Change</u>	<u>Year to Date 2013</u>	<u>Year to Date 2014</u>	<u>Difference 13 vs 14</u>	<u>Percent (%) change</u>
<b>American Eagle</b>	33,932	39,808	5,876	17.32%	468,860	497,417	28,557	6.09%
<b>Delta Airlines</b>	38,331	39,532	1,201	3.13%	484,158	482,296	(1,862)	-0.38%
<b>Southwest</b>	50,118	47,803	(2,315)	-4.62%	667,313	584,349	(82,964)	-12.43%
<b>United Airlines</b>	22,379	22,985	606	2.71%	324,882	305,003	(19,879)	-6.12%
<b>US Airways</b>	11,744	10,572	(1,172)	-9.98%	152,161	139,148	(13,013)	-8.55%
<b>Charters</b>	0	0	0	0.00%	1,035	1,406	371	35.85%
<b>Frontier Airlines</b>	4,469	0	(4,469)	-100.00%	53,543	41,728	(11,815)	-22.07%
<b>Allegiant</b>	2,148	1,985	(163)	-7.59%	15,578	25,204	9,626	61.79%
<b>Total</b>	163,121	162,685	(436)	-0.27%	2,167,530	2,076,551	(90,979)	-4.20%

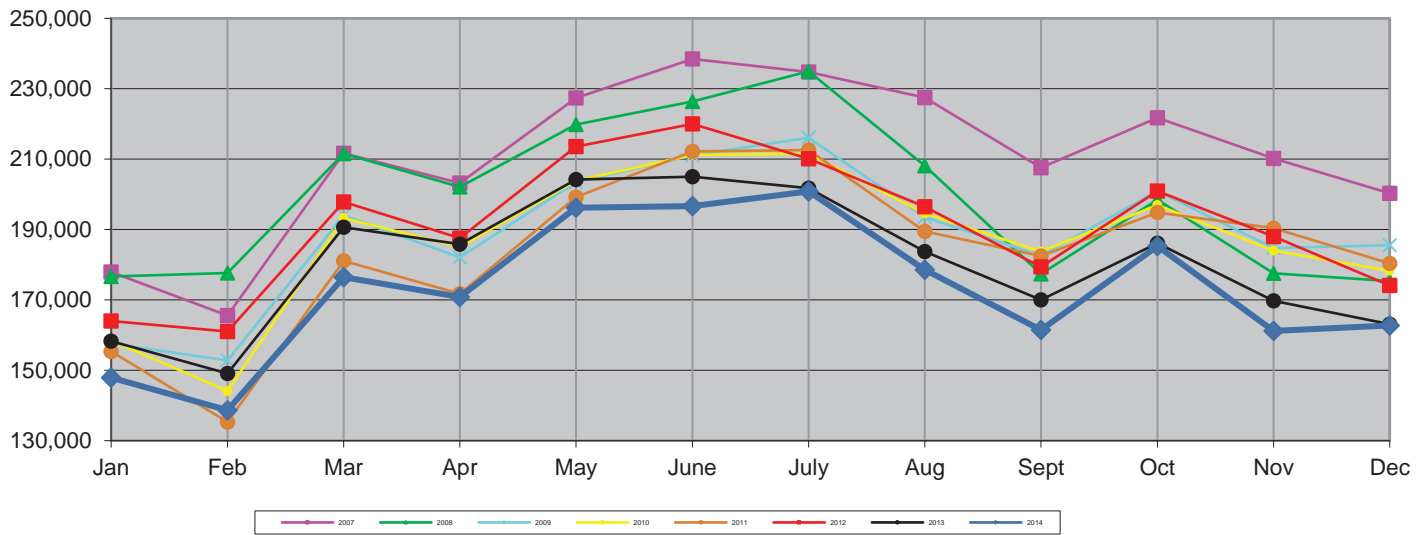
# Passenger Activity Forecast vs. Actual

## Enplaned Passengers



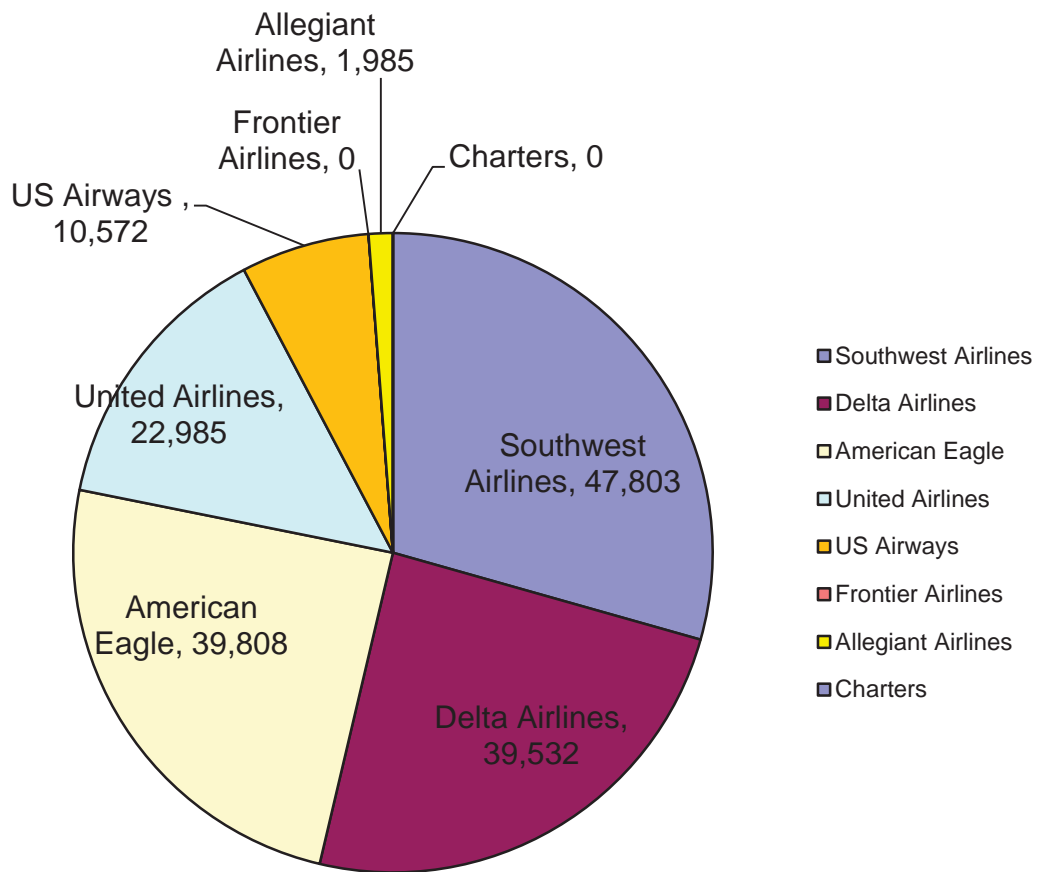
Year	Jan	Feb	Mar	Apr	May	June	July	Aug	Sept	Oct	Nov	Dec	Total	% Change
2007	88,325	82,731	107,198	101,085	115,677	120,522	117,170	113,507	104,622	110,371	104,970	101,519	1,267,697	
2008	87,428	89,060	105,487	100,282	112,170	112,788	116,397	102,813	89,688	99,608	88,146	89,635	1,193,502	-5.85%
2009	78,571	76,974	96,260	91,412	103,874	105,388	109,071	94,853	91,821	100,433	91,978	94,335	1,134,970	-4.90%
2010	78,740	72,692	94,712	94,049	102,938	106,056	107,169	94,944	92,497	98,309	91,966	90,631	1,124,703	-0.90%
2011	77,188	67,684	90,497	86,187	100,489	106,822	106,919	92,754	91,655	97,074	94,407	91,334	1,103,010	-1.93%
2012	80,845	80,877	98,642	93,745	109,957	110,099	105,303	96,965	89,916	99,426	94,303	87,808	1,147,886	4.07%
2013	78,743	74,585	94,153	94,050	104,483	102,923	100,430	89,815	84,673	94,200	84,442	82,826	1,085,323	-5.45%
2014	73,639	69,459	88,282	84,630	99,882	99,128	100,034	87,230	80,800	92,447	80,485	82,367	1,038,383	-4.32%

## Total Passengers



Year	Jan	Feb	Mar	Apr	May	June	July	Aug	Sept	Oct	Nov	Dec	Total	% Change
2007	177,938	165,556	211,664	203,221	227,378	238,456	234,722	227,447	207,571	221,707	210,230	200,239	2,526,129	
2008	176,679	177,682	211,580	202,061	219,789	226,404	234,938	208,068	177,341	198,479	177,505	175,360	2,385,886	-5.55%
2009	157,555	152,796	193,967	182,117	203,478	211,131	216,063	193,509	182,519	200,934	184,704	185,532	2,264,305	-5.10%
2010	158,421	144,119	193,163	185,079	203,814	211,196	211,524	194,568	183,695	196,942	183,993	178,271	2,244,785	-0.86%
2011	155,322	135,309	181,095	171,718	199,200	212,233	212,561	189,436	182,445	194,843	190,399	180,394	2,204,955	-1.77%
2012	164,029	161,016	197,811	187,582	213,570	219,997	210,107	196,454	179,368	200,891	188,043	174,094	2,292,962	3.99%
2013	158,318	149,088	190,628	185,817	204,169	205,003	201,760	183,707	170,046	186,140	169,733	163,121	2,167,530	-5.47%
2014	147,916	138,646	176,425	170,780	196,205	196,674	200,832	178,524	161,435	185,257	161,172	162,685	2,076,551	-4.20%

**December  
Market Share Report**



<u>Airlines</u>	<u>Total Passengers</u>	<u>Market Share</u>
<b>Southwest Airlines</b>	47,803	29.38%
<b>Delta Airlines</b>	39,532	24.30%
<b>American Eagle</b>	39,808	24.47%
<b>United Airlines</b>	22,985	14.13%
<b>US Airways</b>	10,572	6.50%
<b>Frontier Airlines</b>	0	0.00%
<b>Allegiant Airlines</b>	1,985	1.22%
<b>Charters</b>	0	0.00%
<b>Total</b>	<b>162,685</b>	<b>100.00%</b>

**LIT**  
**Total Passengers**

	<b>2014 Total Passengers</b>	<b>2013 Total Passengers</b>	<b>Passenger Difference 13 vs 14</b>	<b>Percent (%) Change 13 vs 14</b>
<b>January</b>	147,916	158,318	(10,402)	-6.57%
<b>February</b>	138,646	149,088	(10,442)	-7.00%
<b>March</b>	176,425	190,628	(14,203)	-7.45%
<b>April</b>	170,780	185,817	(15,037)	-8.09%
<b>May</b>	196,205	204,169	(7,964)	-3.90%
<b>June</b>	196,674	205,003	(8,329)	-4.06%
<b>July</b>	200,832	201,760	(928)	-0.46%
<b>August</b>	178,524	183,707	(5,183)	-2.82%
<b>September</b>	161,435	170,046	(8,611)	-5.06%
<b>October</b>	185,257	186,140	(883)	-0.47%
<b>November</b>	161,172	169,733	(8,561)	-5.04%
<b>December</b>	162,685	163,121	(436)	-0.27%
<b>Total</b>	2,076,551	2,167,530	(90,979)	-4.20%

	<b>Year-to-Date 2014</b>	<b>Year-to-Date 2013</b>	<b>Year-to-Date Passenger Difference 13 vs 14</b>	<b>Year-to-Date Percent (%) Change 13 vs 14</b>
<b>Total Passengers</b>	2,076,551	2,167,530	(90,979)	-4.20%